

# *The R&I Advantage*

Manufacturer of Precision Part Placement Devices Since 1968



## **OUR MISSION STATEMENT**

We at R&I Manufacturing Company will continually strive to offer high quality automation components while also operating on basic principles such as Integrity, Ethics, Honesty, and a caring attitude to be a company you can trust and enjoy working with.



## **CUSTOMER SUPPORT**

R&I Manufacturing Company offers strong and thorough support to the customer with regards to application needs. Being a smaller, more flexible manufacturer of automation components allows us to provide this excellent application support. This is done through forming a close relationship between the machine builders and end users and our knowledgeable staff. This relationship will allow for constant communication regarding application needs and wants. It will also allow for constant communication on technological advances such as new designs and ideas from both companies.

Another way in which R&I Manufacturing Company offers application support is through our website ([www.rimfg.com](http://www.rimfg.com)). On this website we provide all of our 2-D and 3-D cad files, product specs, company and contact information and updates on anything new with the product line and company. We have put a great deal of effort into making the website thorough and efficient so that obtaining product information is very simple and quick for the customer.

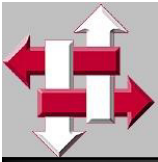


## **DELIVERY**

The complete basic product line consists of stock items, which are readily available at the factory when ordered. When Stock items are ordered they are shipped either the **same day** or the next day VIA UPS ground, unless otherwise specified by the customer. With customizations or custom designs a timeframe for delivery will be established at time of ordering. If a custom item or customization will be frequently used, R&I can establish a stocking program to provide quicker delivery. This has been implemented for many of our customers and has proven to be successful.

R&I Manufacturing Company will also offer consignment on any of the products with no time constraints. At the end of the consignment the product must be returned to the factory unmodified or purchased out right.

**Simply Durable**  
**Simply Precise**  
**Simply *R&I***



# Products

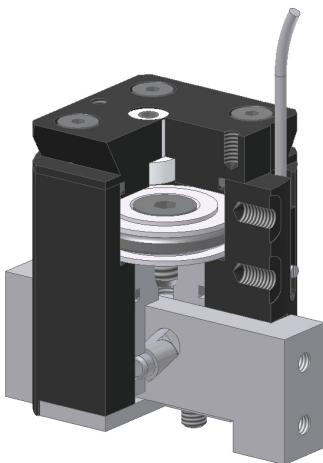


## DURABLE DESIGN

### QUALITY CONSTRUCTION

— **DURA**-bility is not just in the name ! —

All of our products are designed and built with durability and quality as top priorities. R&I Manufacturing's products are different. They are designed from the ground up to be simple with less moving parts to create an extremely durable product. And just because they're simple does mean they don't have the features you need to get the job done. R&I products are packed with features and options from precision mounting to magnetic sensors to handle your design requirements.



## SERVICE

R&I Manufacturing offers several methods of servicing products. The first option is to have us rebuild the product. With this option the merchandise would be shipped back to us at the factory. Upon receipt a technician would disassemble the product and assess the actions that need to be taken. The customer would then be contacted for approval to go ahead with the service. This service can be done when a problem arises or as a preventative maintenance. Some customers setup a service agreement with R&I to rebuild products after so many cycles to prevent any breakdown.

R&I Manufacturing Company also stocks all rebuild kits and spare parts to allow customers to do repairs or rebuilds on their own. Since all spare parts and rebuild kits are stocked there is no wait in the event of an emergency. Shipment can also be enhanced to next day service for emergencies or need for rush shipment.

## COMMON TO ALL R&I DURA-PRODUCTS

- **FEWER MOVING PARTS**
- **SIMPLE DESIGN**
- **ONE PIECE BODIES**
- **EXTREMELY DURABLE**
- **MANY FEATURES AND OPTIONS**

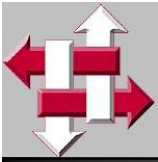
**DESIGNED - MANUFACTURED - ASSEMBLED IN THE USA**



**Have you ever said : “ They don't make'm like that anymore ”**



**Well , we *still* do!**



# Customs

Whether it's as simple as additional mounting holes to a standard product or as complex as an entirely new design, R&I can help.



## CUSTOM WORK

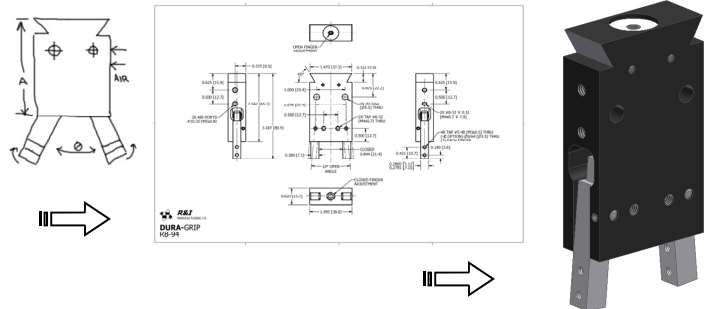
R&I Manufacturing Company provides automation components on a factory direct basis. There are many advantages to dealing with the factory directly. It allows for a close relationship to form between our company and the customer, which is what we strive for and have achieved since 1968. When contacting the factory, an individual from every department, including engineering, R&D, assembly, machining, sales and management is available to assist with applications and needs.

An additional advantage to working with the factory directly is that we offer customization to our existing designs, as well as, custom designing of new products based on the customers needs. This characteristic is unique to R&I, in that, many other automation component manufacturers do not deviate from their standard product line.

R&I **designs, machines, and assembles** all of the products in house and is fully capable, willing, and eager to make changes or customization upon request. If a special design or customization is needed repeatedly, R&I will work to devise special product numbering to make for easy ordering.

For simple modification to existing products we recommends any of the following methods

- *Provide a marked up drawing of any of our available CAD files or catalog pages*
- *Simply Contact us with your request*



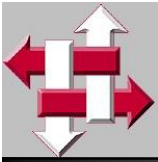
We will quote the design then supply you with print of your design for verification. Standard Part numbers can easily be assigned for easy ordering by you or your customers in the future. Technical documentation can also be provided upon request.

For more complex customs simply contact us and see how we can help!

- **ADDITIONAL MOUNTING**
- **DIFFERENT MATERIALS**
  - **LONGER STROKES**
  - **WIDER BODIES**
  - **MULTI-STATION**
  - **FULL CUSTOMS**



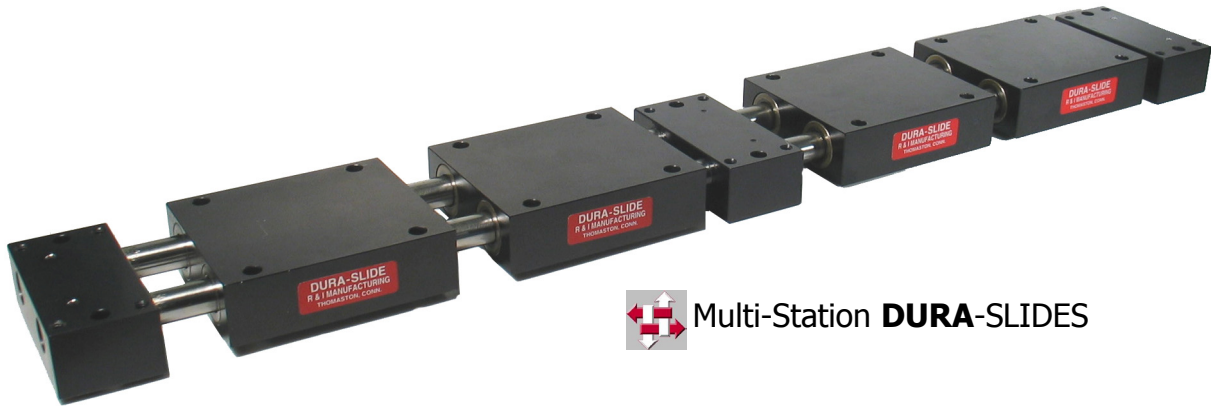
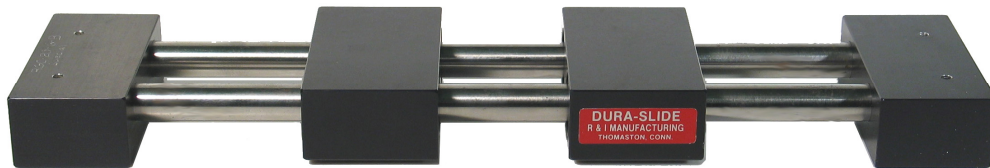
**“ If it's not in the catalog it's *still* possible!**



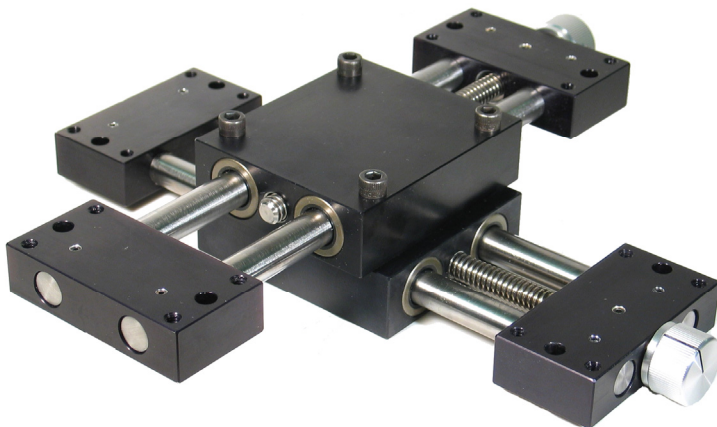
**R&I**  
MANUFACTURING CO.

# Customs

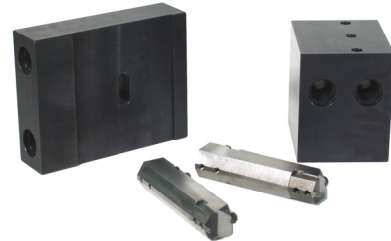
What we can do for you!



 Multi-Station **DURA-SLIDES**



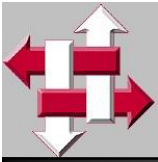
 X-Y Adjustable **DURA-SLIDE**



 Custom Tooling



 All Stainless Steel **DURA-GRIP**



# *Terms and Conditions*



## **LIMITED WARRANTY**

All R&I manufacturing Company products are guaranteed to be free of defects in material and workmanship for a period of one year from shipment. R&I warranty is limited to repairing or replacing products, at its option F.O.B. the factory, upon R&I inspection. The company, in no event shall be responsible for indirect or consequential damages arising from improper installation, tampering, modification, abuse, operating conditions or applications. Apart from the above warranty, these express warranties are in lieu of and exclude all other representation made-both expressed and, or implied. There are no warranties of merchantability of fitness for a particular purpose for products covered by these terms and conditions, which extend beyond the description of the face hereof and R&I shall not be liable directly or indirectly arising from the use of such products or for any consequential damages. R&I Manufacturing reserves the right to change specifications, design and pricing without prior written notice.



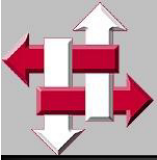
## **RETURNS**

R&I manufacturing company will allow merchandise returns on all DURA-GRIP, DURA-SCAPE, and DURA-TAC units with no restocking charge. All DURA-SLIDE, DURA-THRUST, and DURA-TRANS unit have a 10% restocking fee as they are built to order. Upon receipt, the returned goods would be inspected to be sure they are in original condition and then a refund would be given.



## **SPECIFICATION**

All descriptive and forwarding specifications, including technical drawings and loading information submitted with R&I Manufacturing Company's proposal and contained in this catalog are approximate only and the descriptions and illustrations contained in R&I Manufacturing Company's catalog, price list, and other advertisements matter are intended merely to present a general idea of the goods described therein and none of these shall form part of a contract and any statement or representation made by on behalf of R&I Manufacturing Company.



**R&I**  
MANUFACTURING CO.

## ***Contact Information***

Mailing Address:

R&I Manufacturing Company  
118 Napco Drive  
Terryville, CT  
06786

Phone Numbers:

*Phone:* 1-800-588-0174  
(860)-589-6364  
*Fax:* (860)-589-6235

Email:

*Information* : Info@rimfg.com  
*Sales* : Sales@rimfg.com  
*Engineering* : JDeCarolus@rimfg.com