



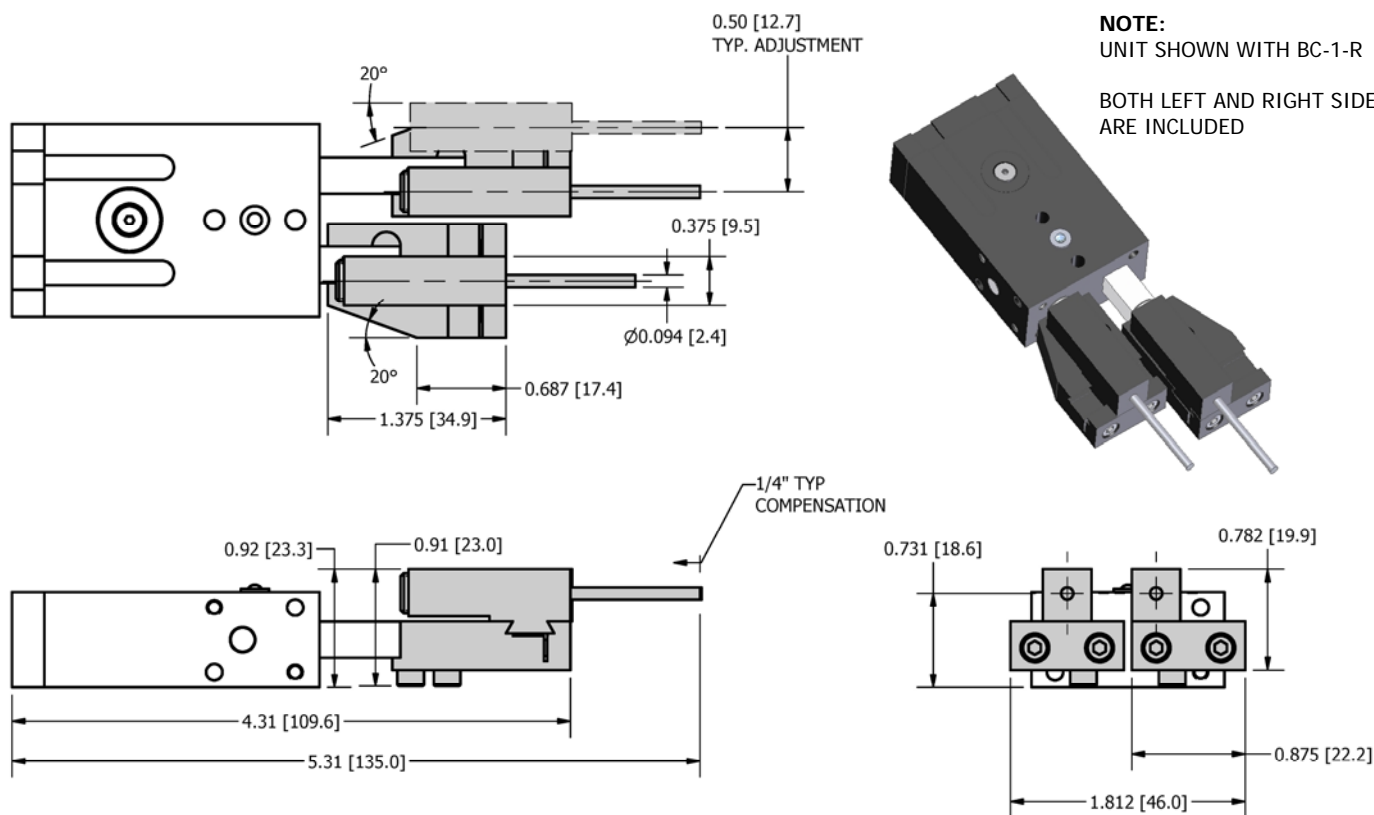
DIMENSIONAL DRAWING

AT-1-LD was designed as universal tooling for our BC-1 Escapement Device. The AT-1-LD provides a simple, accurate, and adjustable set of tooling to handle standard part escapement requirements. Use the AT-1-LD when custom tooling is not required.

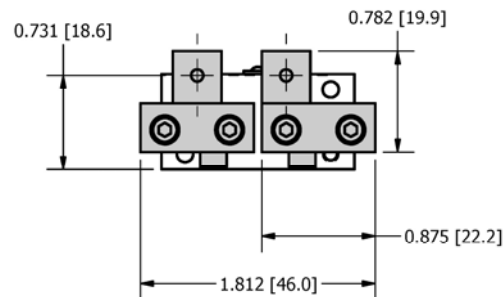
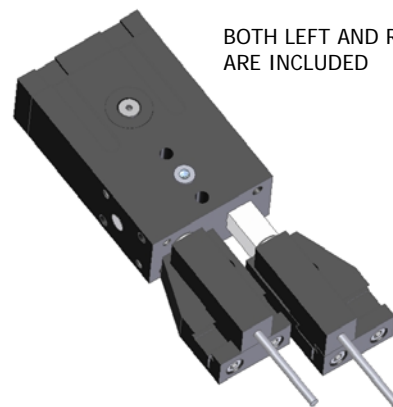
Use the AT-1-LD with our BC-1 instead of designing custom tooling.

FEATURES:

- **Adjustable pin spacing**
- **Spring Loaded pins for crash protection or load control**
- **Optional Spring rates**
- **Accurate and simple design**



NOTE:
UNIT SHOWN WITH BC-1-R
BOTH LEFT AND RIGHT SIDES
ARE INCLUDED



HOW TO ORDER : BASIC UNIT

METRIC

BASIC MODEL

M

AT-1-LD

METRIC M

Includes a springs set with
following fully collapsed loads

5 lb [22.2 N]
7 lb [31.1 N]
10 lb [44.5 N]

NOTE:

When ordering a BC-1 for use with an AT-1-LD the (-R) option must be specified for proper operation.

SAMPLE ORDER: MAT-1-LD

Ex) Metric AT-1-LD



DIMENSIONAL DRAWING

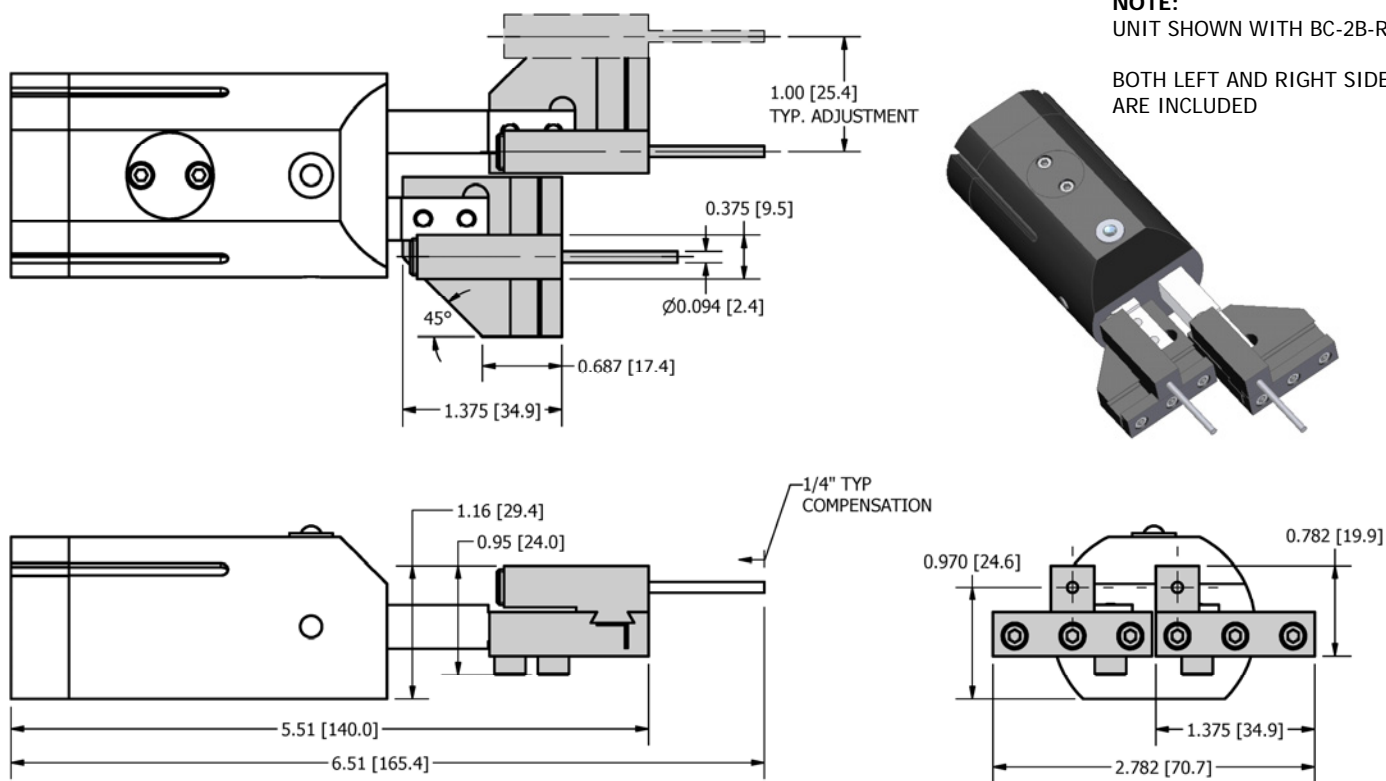
AT-2-LD was designed as universal tooling for our BC-2B Escapement Device. The AT-2-LD provides a simple, accurate, and adjustable set of tooling to handle standard part escapement requirements. Use the AT-2-LD when custom tooling is not required.

Use the AT-2-LD with our BC-2B instead of designing custom tooling.

FEATURES:

- **Adjustable pin spacing**
- **Spring Loaded pins for crash protection or load control**
- **Optional Spring rates**
- **Accurate and simple design**

NOTE:
UNIT SHOWN WITH BC-2B-R
BOTH LEFT AND RIGHT SIDES
ARE INCLUDED



HOW TO ORDER : BASIC UNIT

METRIC

BASIC MODEL

M

AT-2-LD

METRIC M

Includes a springs set with
following fully collapsed loads

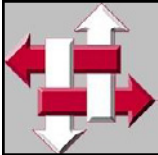
- 5 lb [22.2 N]
- 7 lb [31.1 N]
- 10 lb [44.5 N]

SAMPLE ORDER: AT-2-LD

Ex) AT-2-LD

NOTE:

When ordering a BC-2B for use with an AT-2-LD the (-R) option must be specified for proper operation.

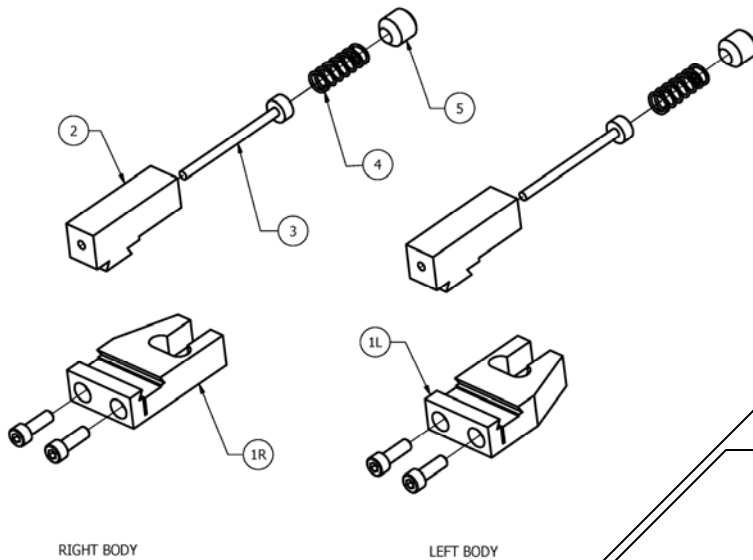


R&I
MANUFACTURING CO.

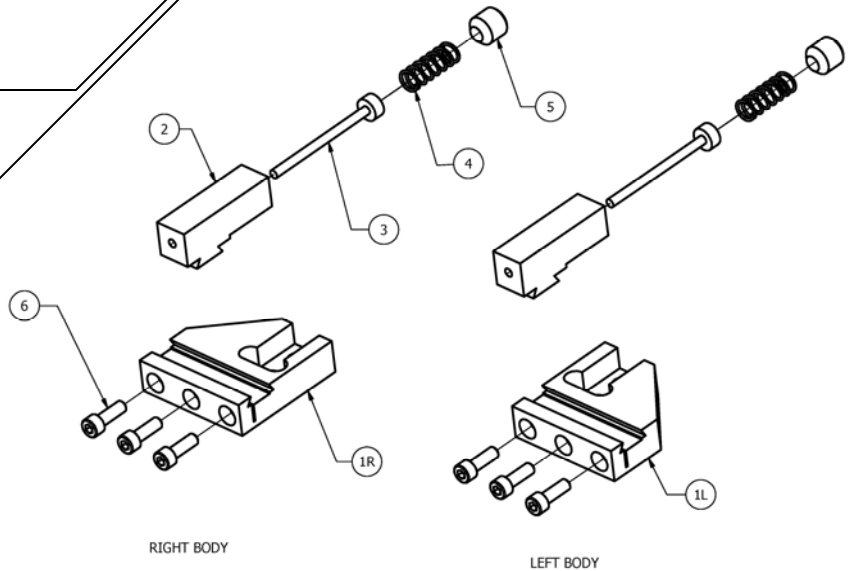
DURA-SCAPE
ACCESSORIES

AT-SERIES
ADJUSTABLE SPRING
LOADED TOOLING

EXPLODED VIEW



AT-1-LD

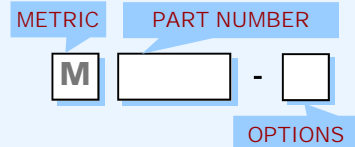


AT-2-LD

PARTS LIST

HOW TO ORDER PARTS

ITEM	REQ'D	NAME	AT-1-LD	AT-2-LD
1L	1	Left Body	AT-101L	AT-201L
1R	1	Right Body	AT-101R	AT-201R
2	2	Pin Holder	AT-202	
3	2	Pin *	AT-203	
4	2	Spring *	AT-204-L ¹	
5	1	Set Screw *	FSS-5/16-24X5/16 [FSS-M8x8] [†]	
6	2	Cap Screw *	FSH-5-40X3/8 [FSH-M3x10] [†]	



SAMPLE ORDER: AT-204-7

Ex) AT-2-LD Spring with 7 lb [31.1 N] load

OPTIONS (see product pages for information)

¹ - L = Spring Load

NOTES

[†] - Metric Fasteners

* - Metric code not required